A photograph of a sunset over the ocean, viewed from the deck of a ship. The sun is a bright, glowing orb on the horizon, casting a shimmering path of light across the dark, choppy water. The sky is filled with soft, golden clouds. In the foreground, the dark metal railing of the ship's deck is visible, framing the bottom of the image.

RAS & FAS EQUIPMENT FOR REPLENISHMENT SYSTEM



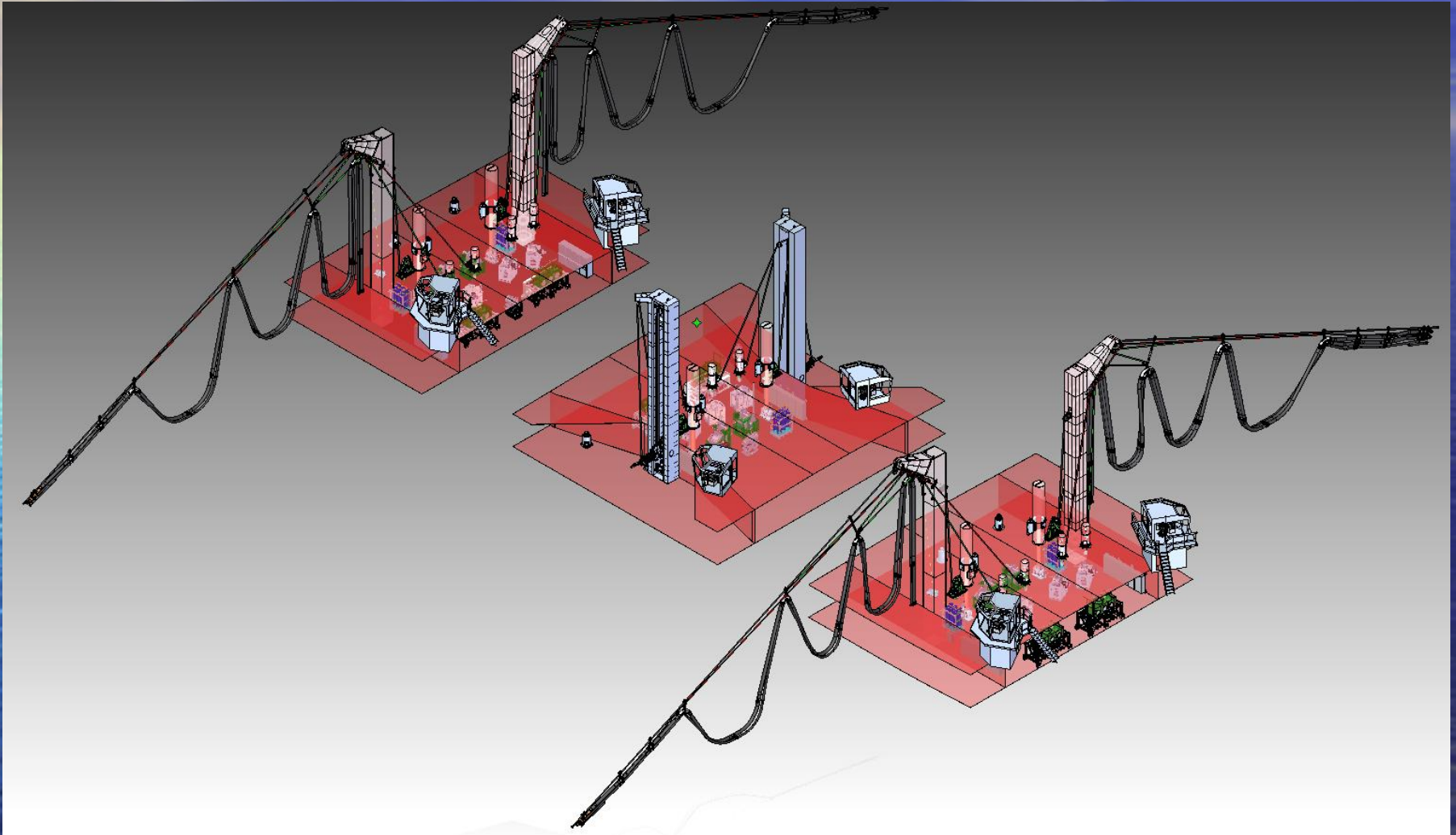
Operational ship separation : normally 24 m ~ 55 m

Ship' s Condition : Sea state 5 (wave height approx. 3 m)

Ship's speed : 15 knots or less

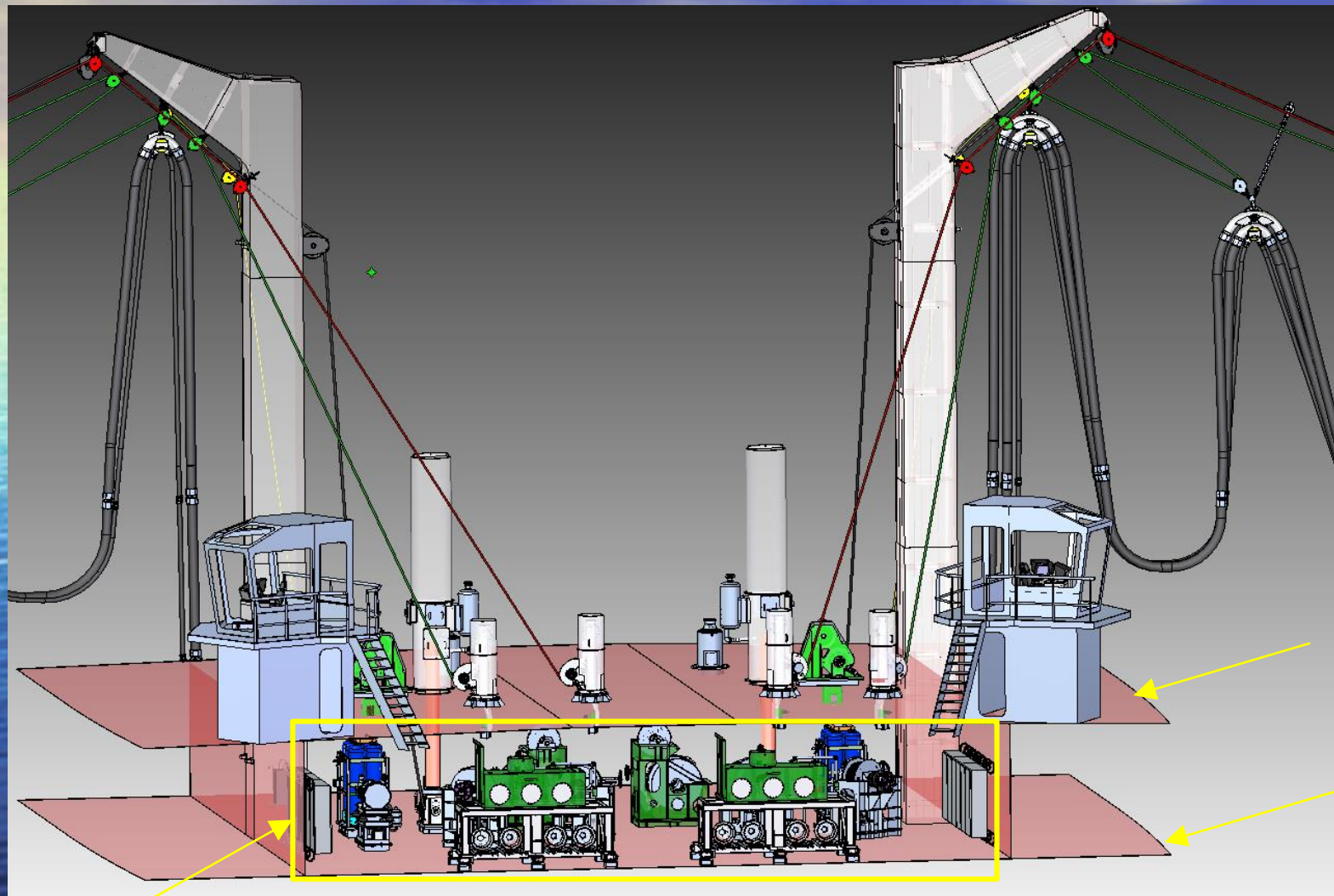


4 FAS AND 2 RAS ENCLOSED UNREP STATION



FAS ENCLOSED UNREP STATION

(Fuel Hose Length : approx. 120 m)

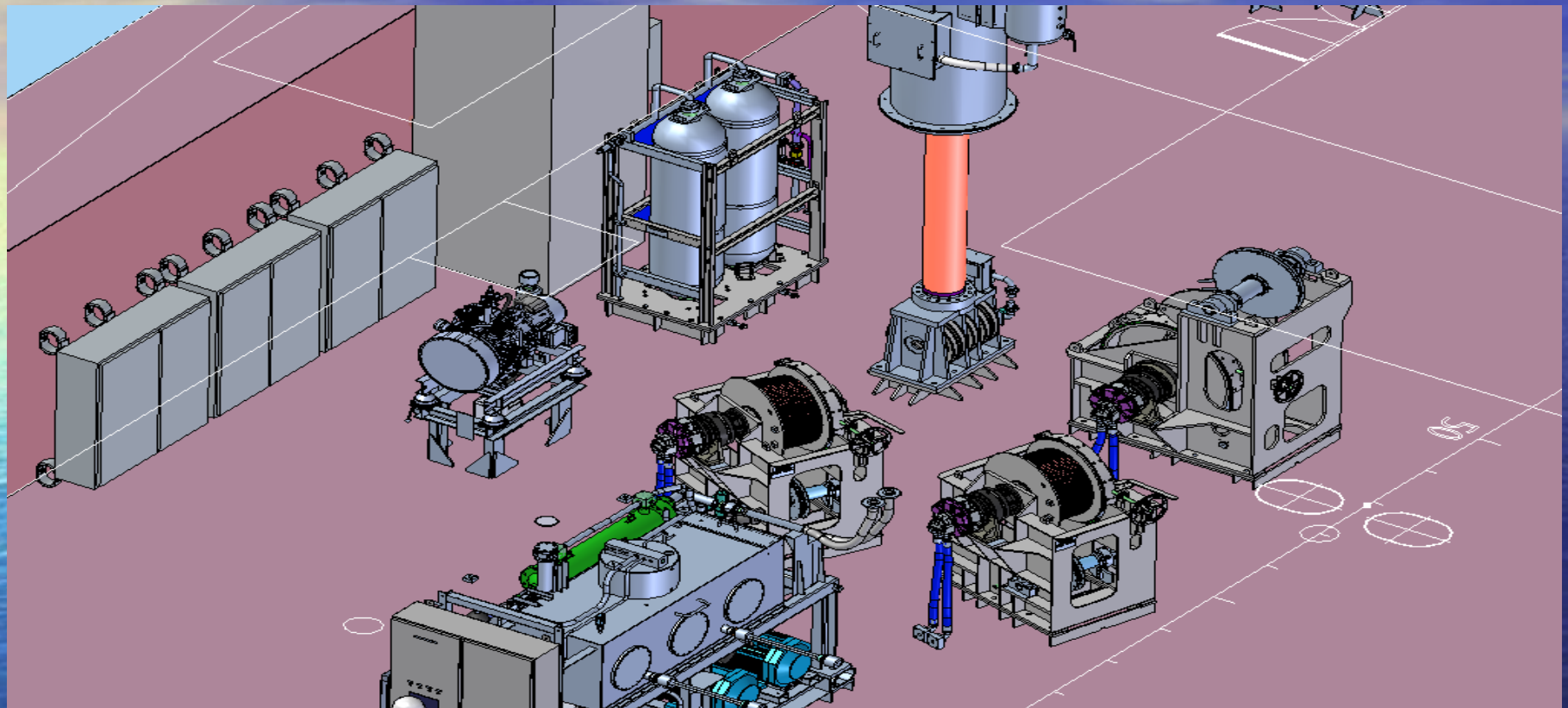


01 DECK

MAIN DECK

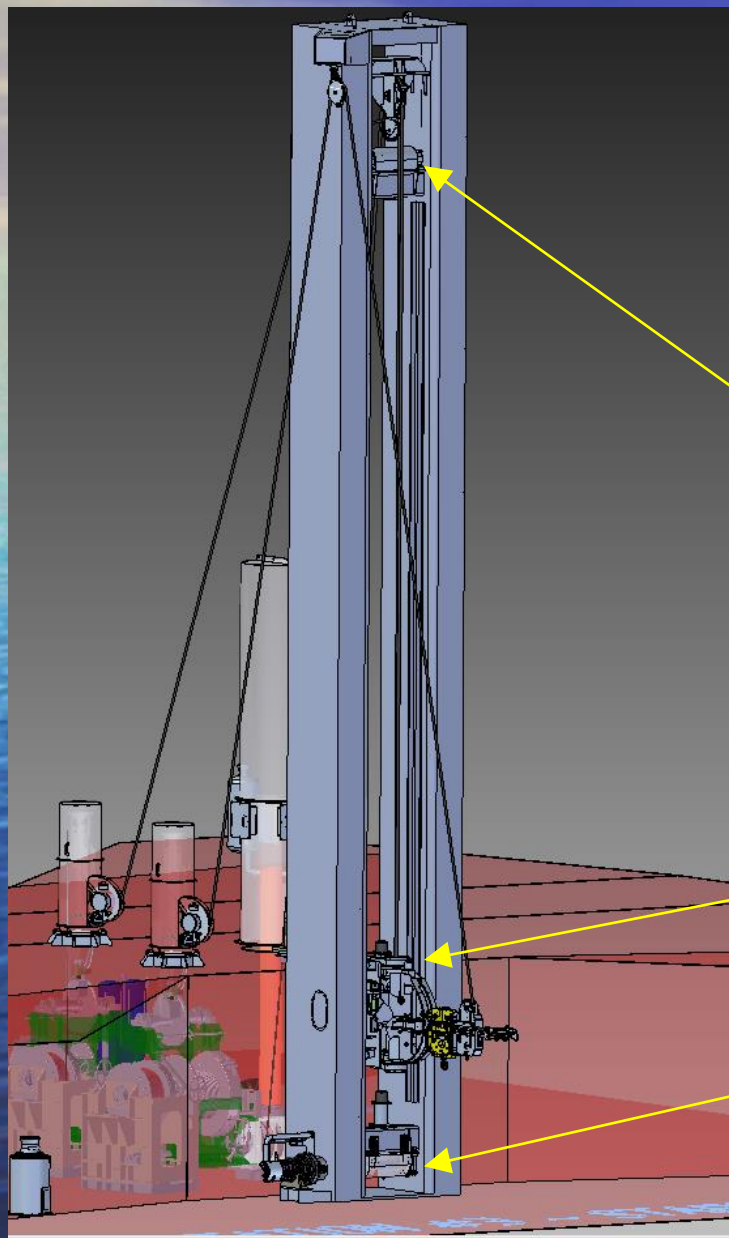
ENCLOSED DECK EQUIPMENT (OPTION 2)

FAS OPEN DECK UNREP STATION



OPEN DECK EQUIPMENT
(OPTION 1)

RAS SLIDING TROLLEY BLOCK SYSTEM

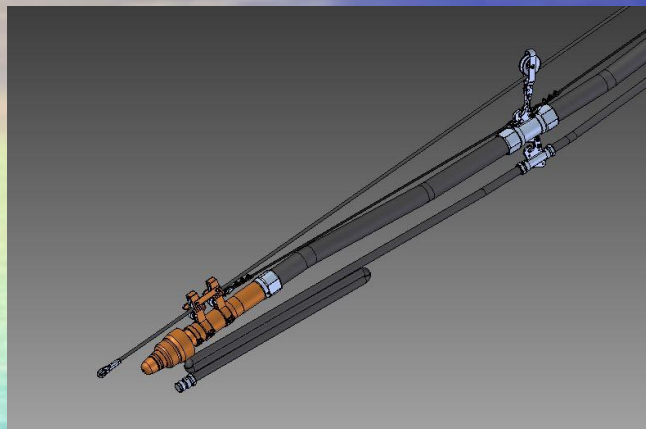


Sliding Trolley Block raises and lowers the highline on the deck, and loads and unloads cargo(2 tons)

UPPER SPROCKET
ROLLER CHAIN SHAFT

SLIDING TROLLEY
BLOCK

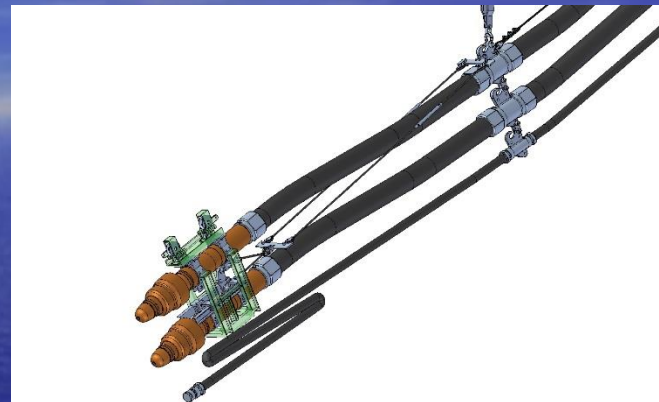
LOWER SPROCKET
ROLLER CHAIN DRIVE
SHAFT



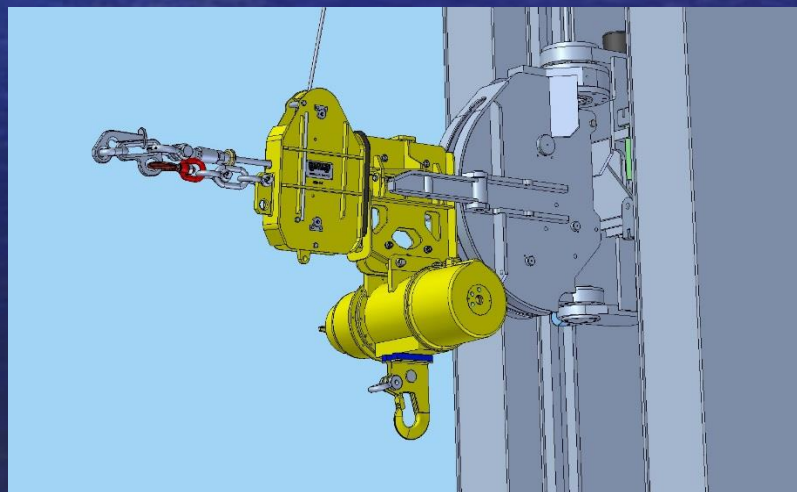
EACH FAS STATION,
SINGLE & DOUBLE

ONE : FUEL

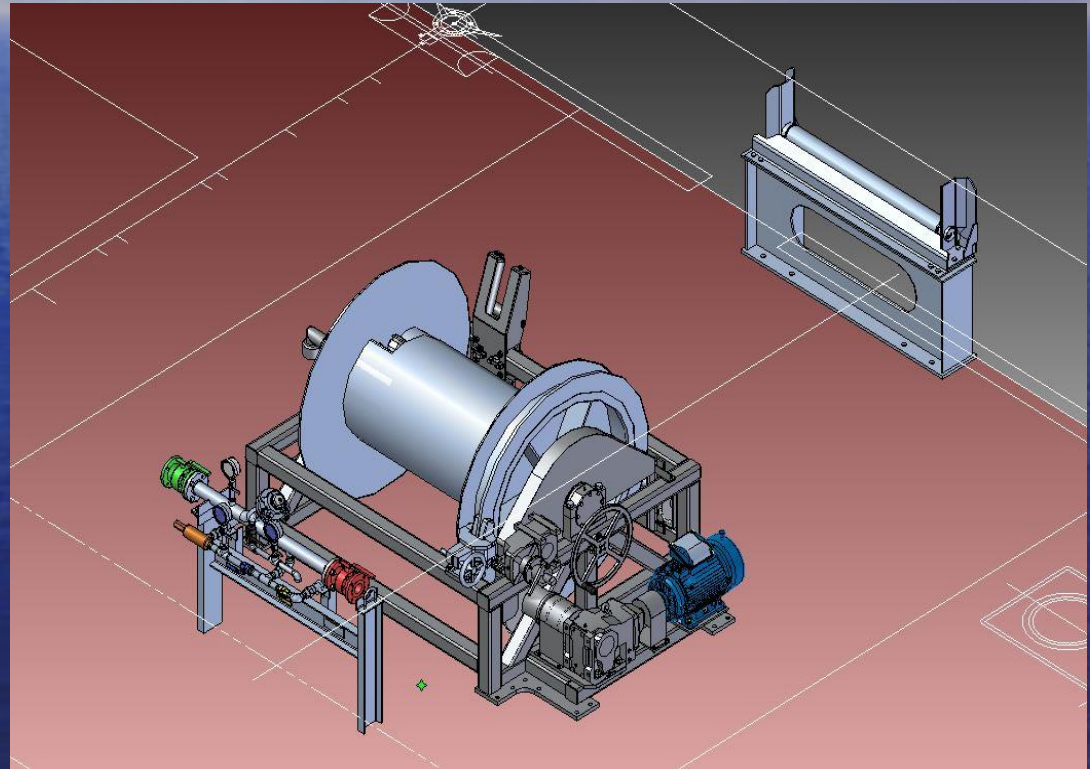
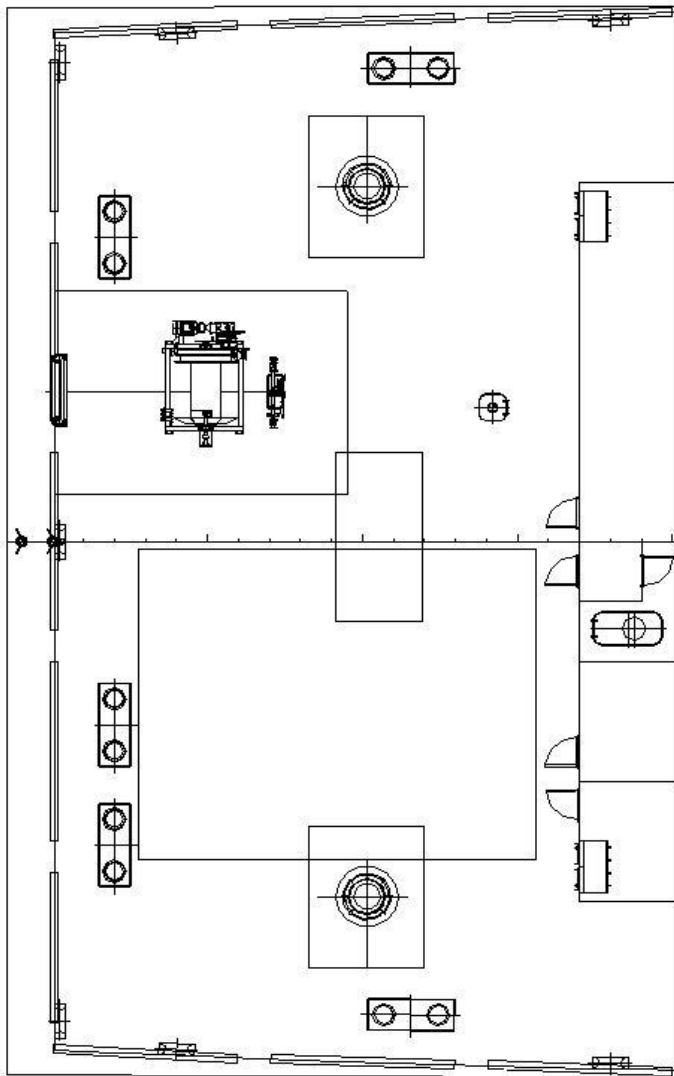
TWO : WATER



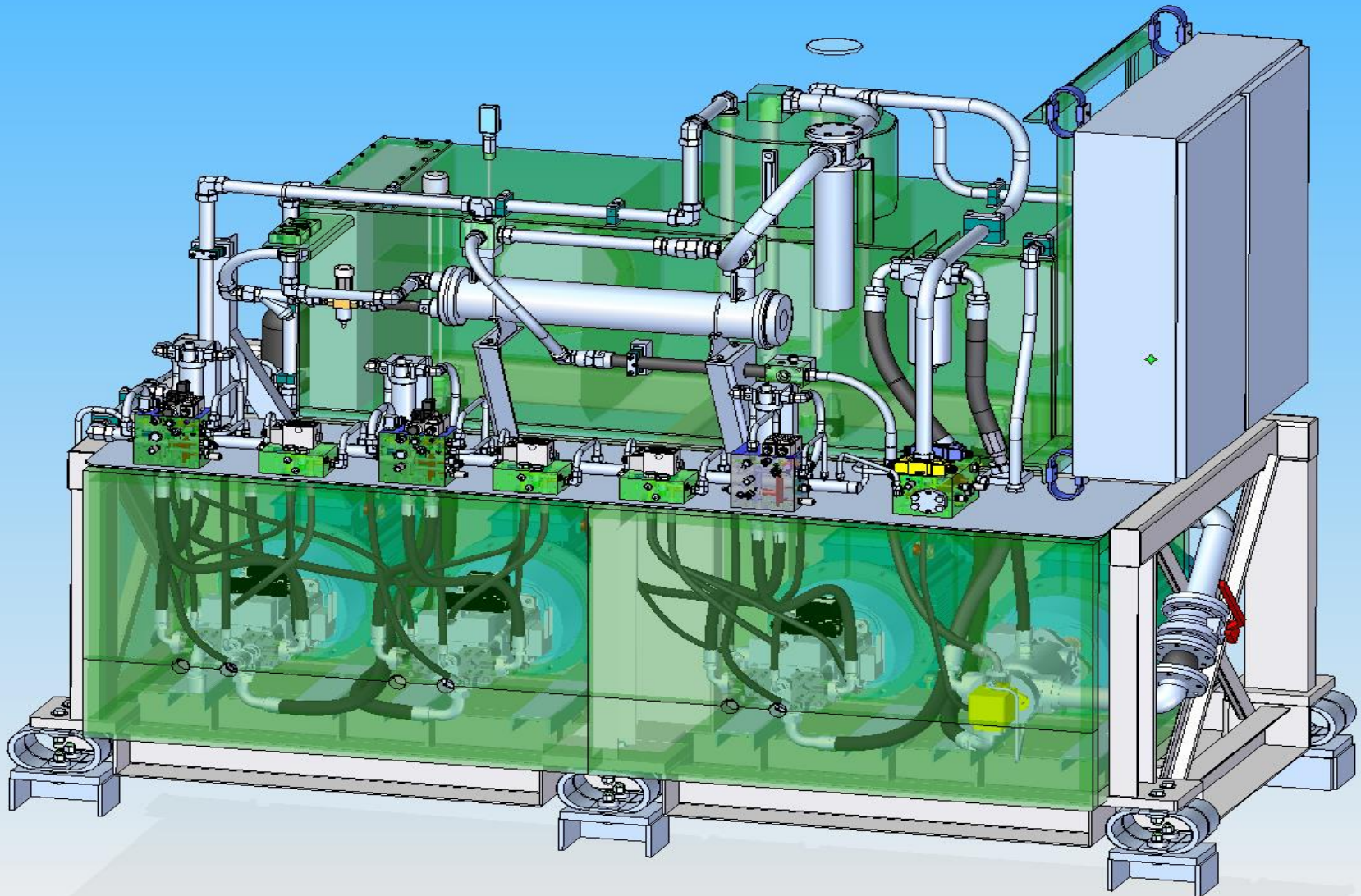
EACH RAS STATION ,
2 TON CARGO TRANFER



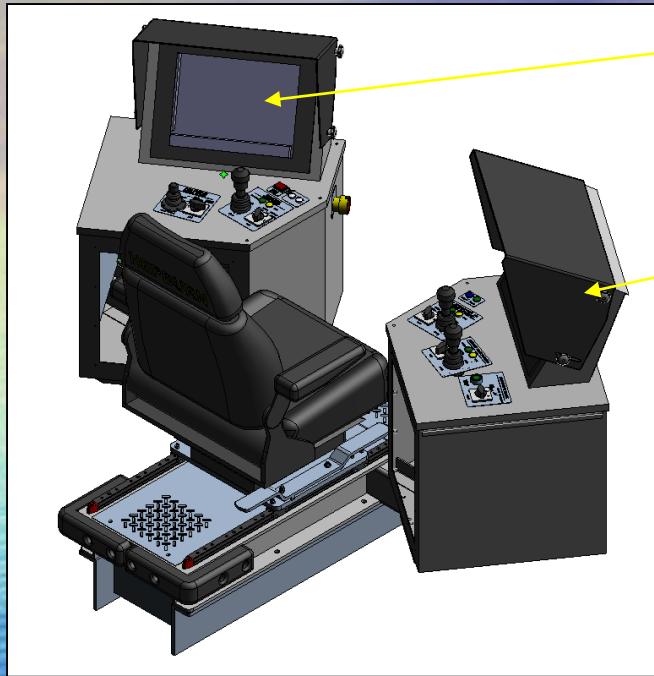
ASTERN HOSE REEL, STERN FUEL REPLENISHMENT



Hydraulic Power Unit (HPU)

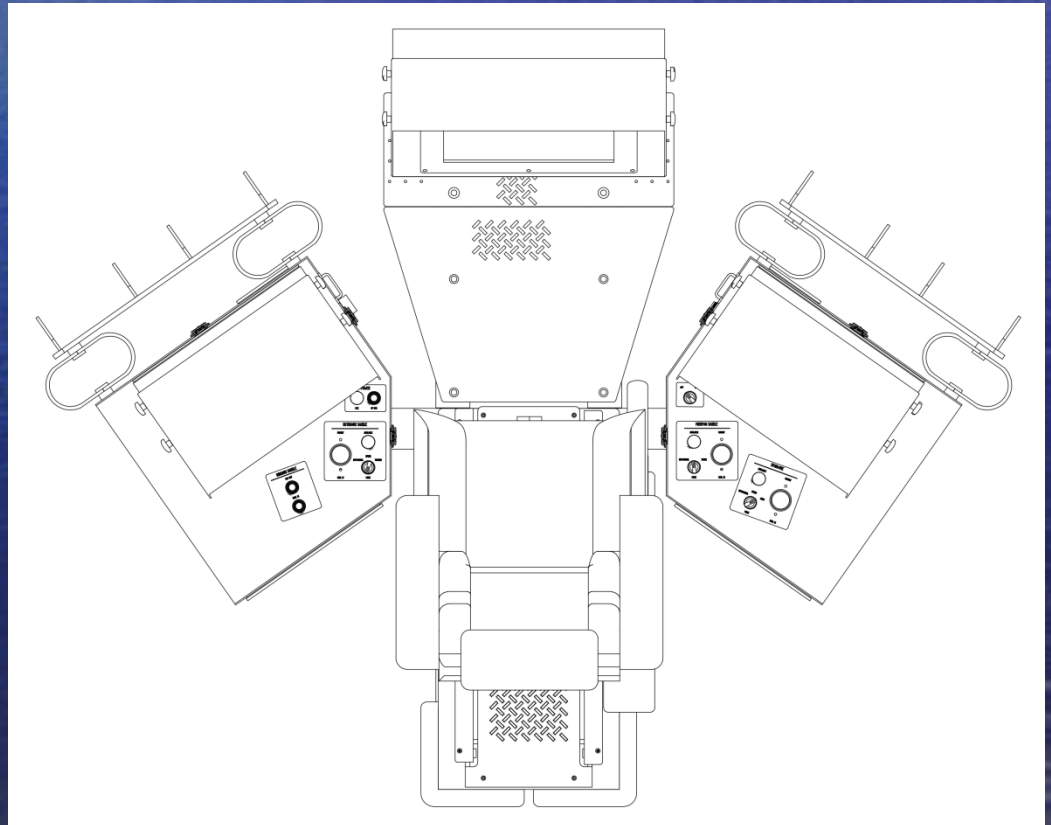


FAS OPERATOR CONSOLE

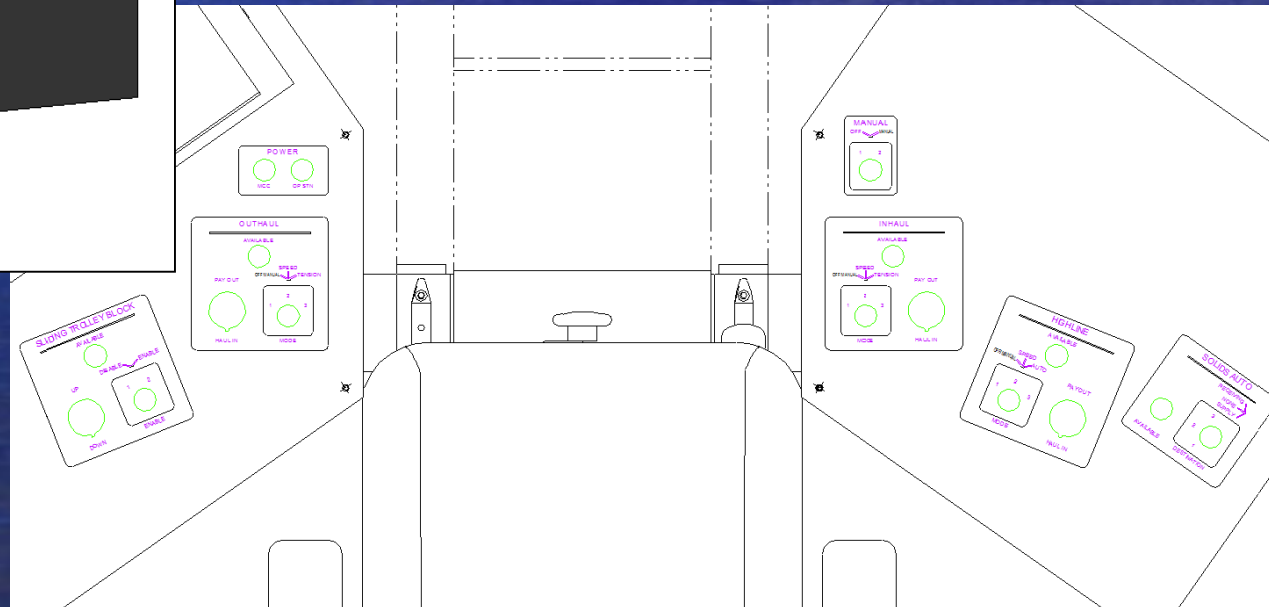


Cargo Fuel Handling HMI Screen

UNREP HMI Screen



RAS OPERATOR CONSOLE



RAS Solids HMI Display

Winch Status and Activity

Tension Target and Feedback

Receiving Ship and Traveller Animation

Ram Position and Deadband Settings

Diagnostic Messages

Menus

Sliding Trolley Block

Security

Solids Auto Settings



KOREA NAVY TEST AND TRAINING FOR UNREP



1594681299557-0 - 바로 가기